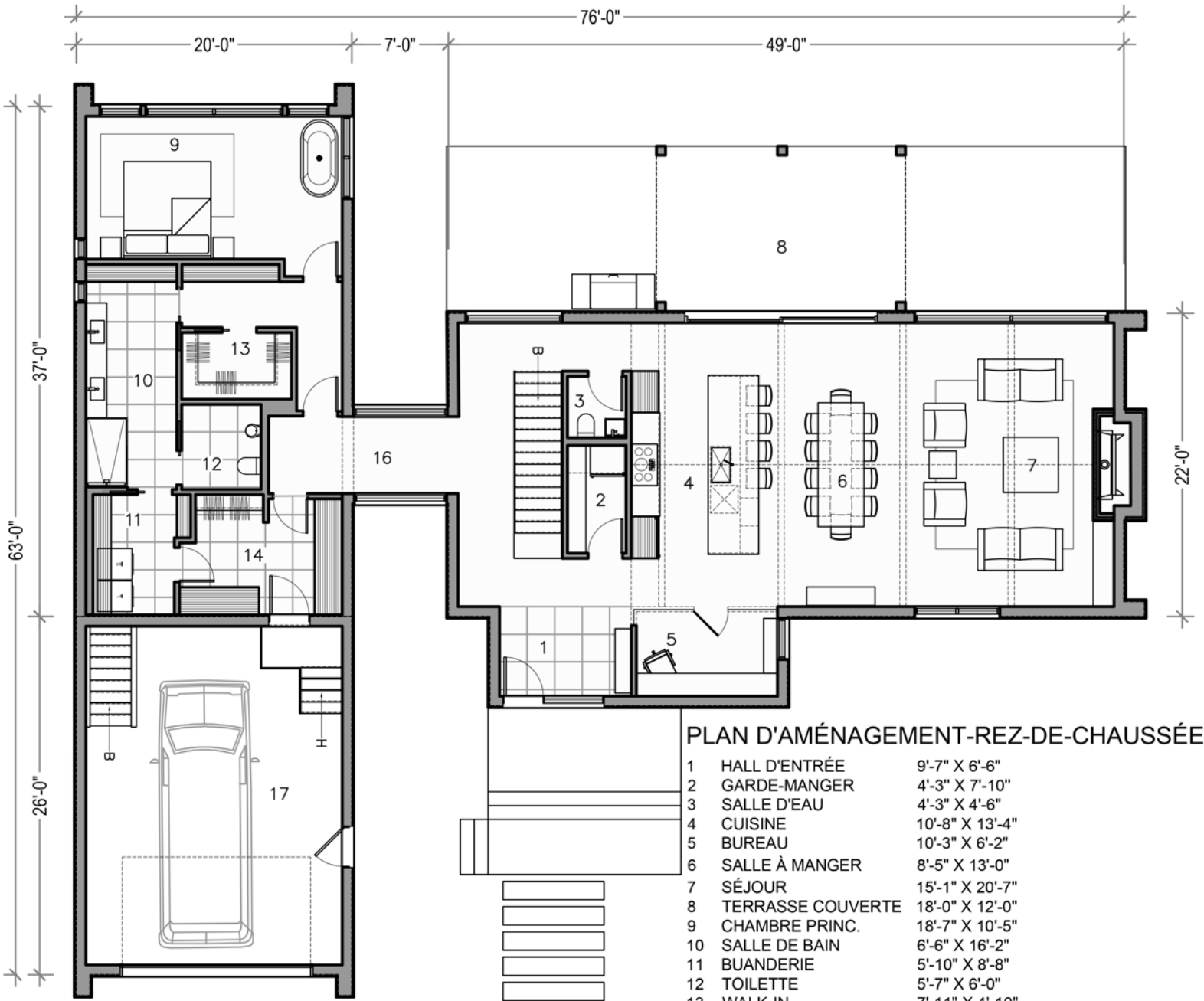




# N-234 Elda

# TALO

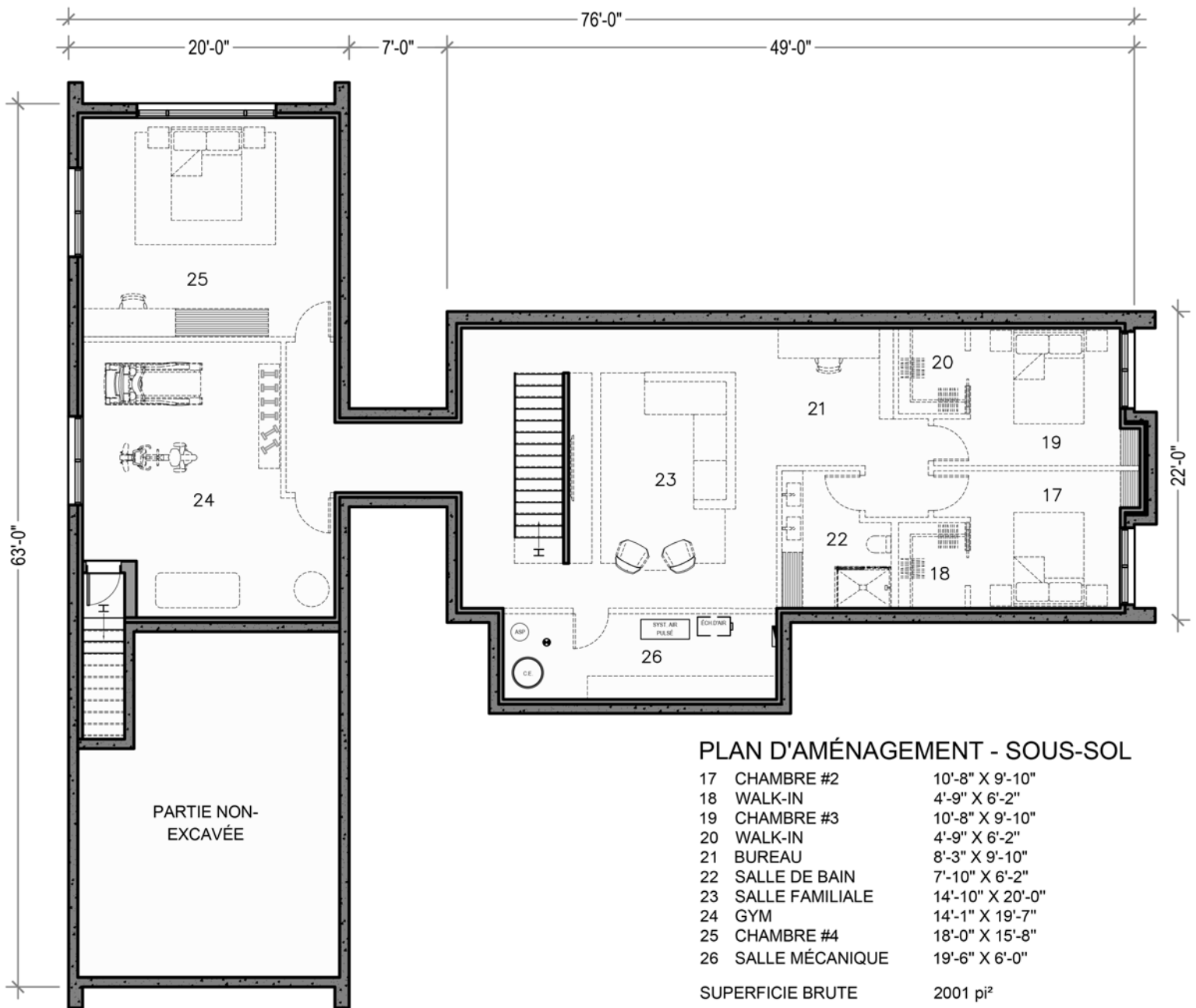


**PLAN D'AMÉNAGEMENT-REZ-DE-CHAUSSÉE**

1	HALL D'ENTRÉE	9'-7" X 6'-6"
2	GARDE-MANGER	4'-3" X 7'-10"
3	SALLE D'EAU	4'-3" X 4'-6"
4	CUISINE	10'-8" X 13'-4"
5	BUREAU	10'-3" X 6'-2"
6	SALLE À MANGER	8'-5" X 13'-0"
7	SÉJOUR	15'-1" X 20'-7"
8	TERRASSE COUVERTE	18'-0" X 12'-0"
9	CHAMBRE PRINC.	18'-7" X 10'-5"
10	SALLE DE BAIN	6'-6" X 16'-2"
11	BUANDERIE	5'-10" X 8'-8"
12	TOILETTE	5'-7" X 6'-0"
13	WALK-IN	7'-11" X 4'-10"
14	WALK-IN D'ENTRÉE	10'-8" X 8'-4"
15	PASSERELLE	3'-7" X 8'-5"
16	PASSERELLE	8'-6" X 5'-6"
17	GARAGE	18'-7" X 24'-7"
	SUPERFICIE BRUTE	2016 pi <sup>2</sup>
	GARAGE	532 pi <sup>2</sup>

**N-234 Elda**

**TALO**



**N-234 Elda**

**TALO**



# N-234 Elda

# TALO



**N-234 Elda**

**TALO**