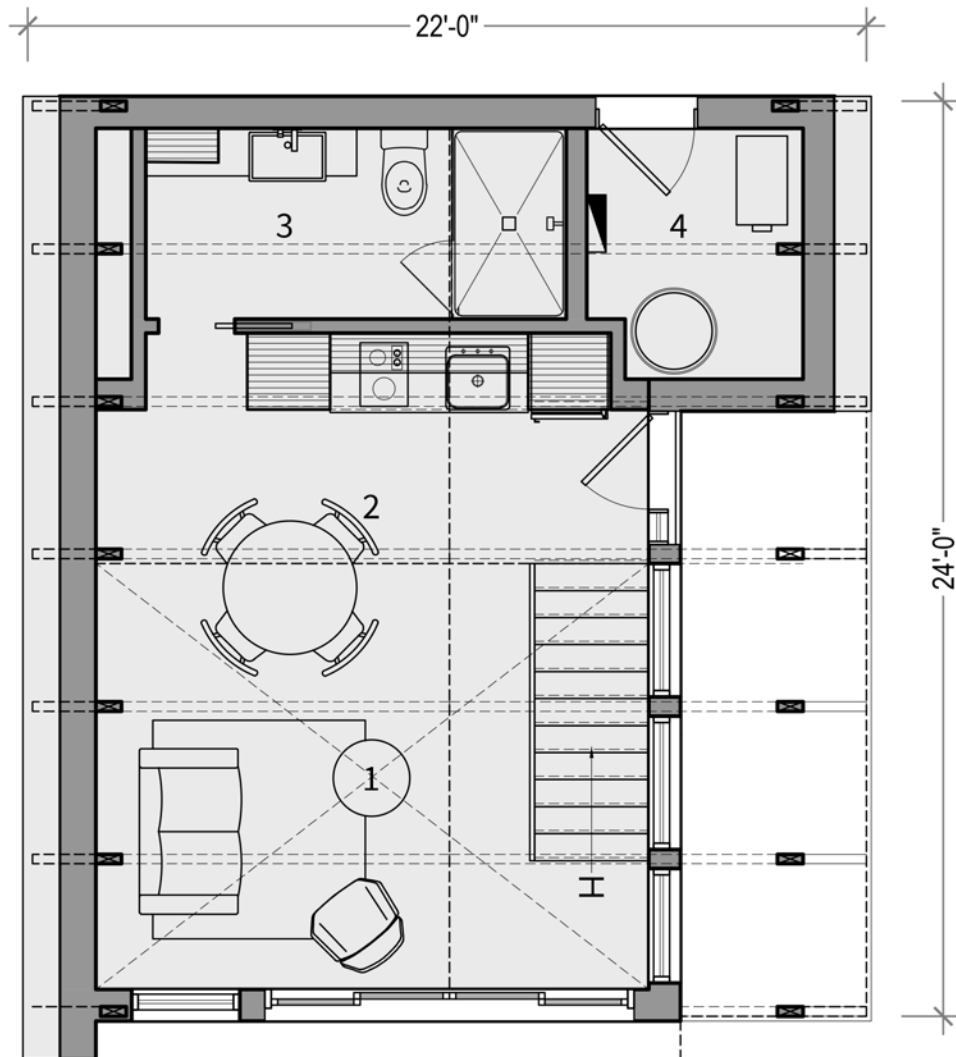




MM-702 Huron

TALO



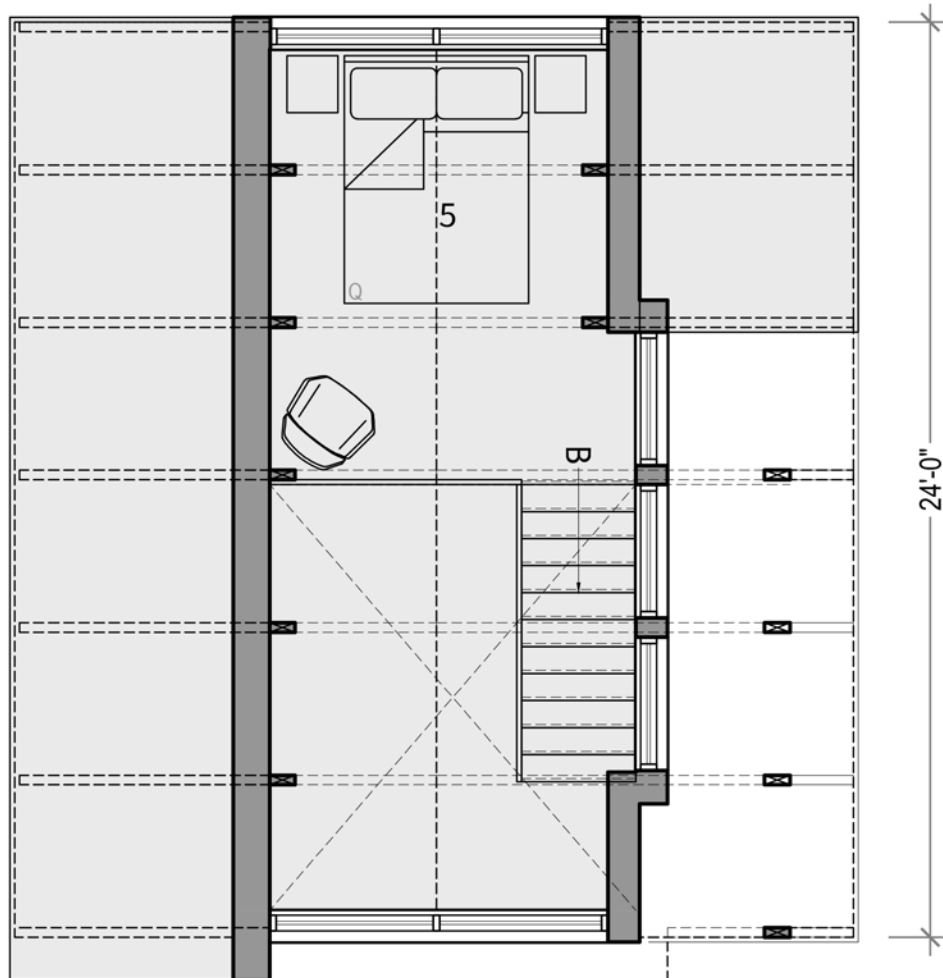
PLAN D'AMÉNAGEMENT

- | | | |
|---|--------------------------|----------------|
| 1 | SÉJOUR | 14'-6" X 7'-4" |
| 2 | CUISINE / SALLE À MANGER | 14'-6" X 7'-4" |
| 3 | SALLE DE BAIN | 11'-0" X 5'-0" |
| 4 | SALLE MÉCANIQUE | 5'-8" x 6'-7" |

SUPERFICIE BRUTE 354 pi²

MM-702 Huron

TALO



PLAN D'AMÉNAGEMENT

5	CHAMBRE	8'-11" x 11-4"
	SUPERFICIE BRUTE	105 pi ²

MM-702 Huron

TALO



MM-702 Huron

TALO