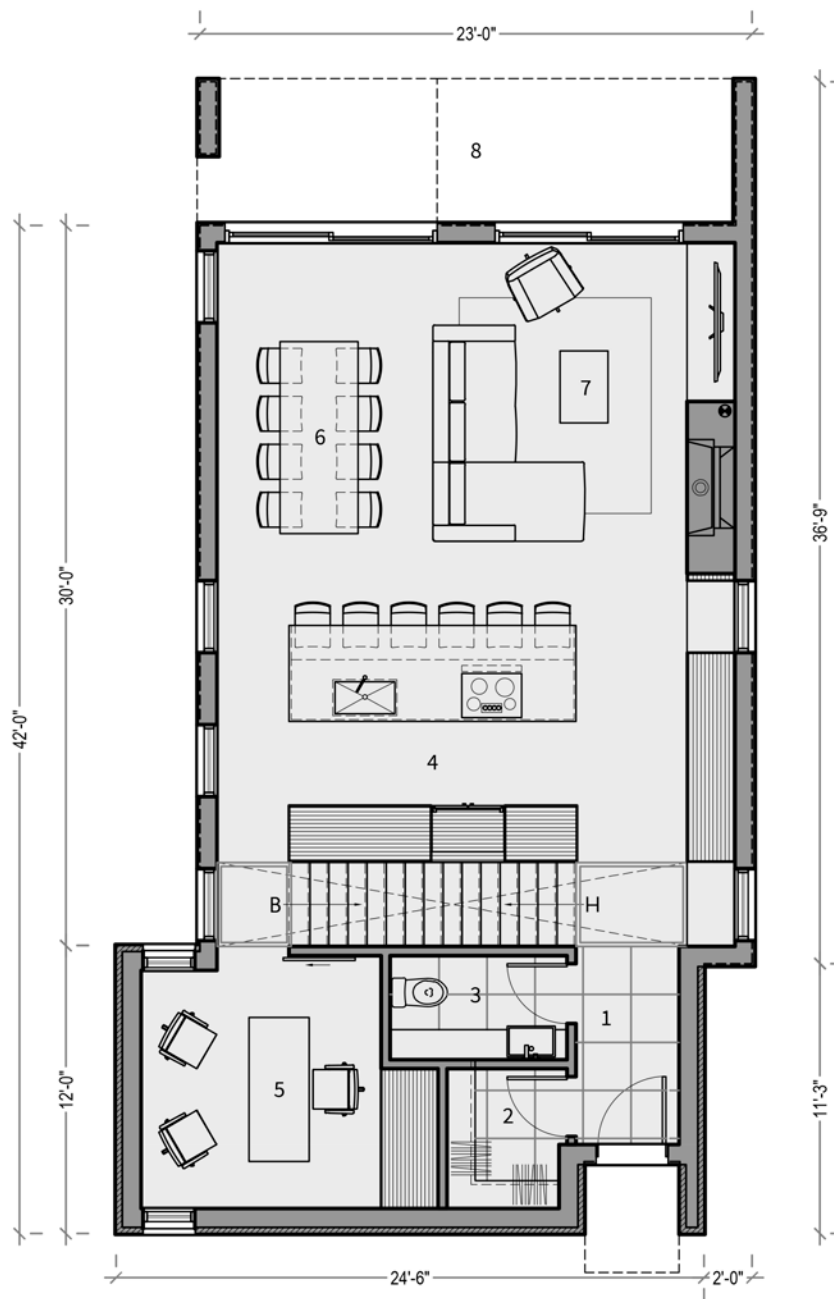




U-401 Newtown

TALO

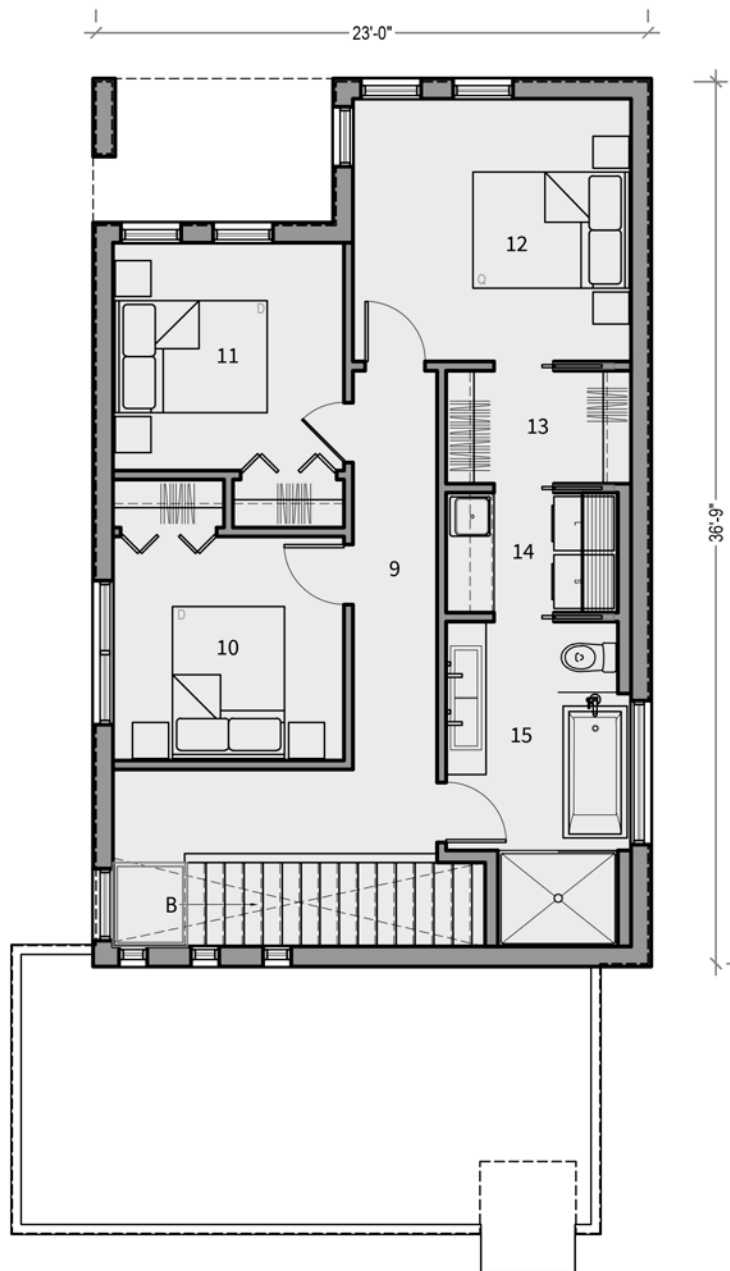


PLAN D'AMÉNAGEMENT - REZ-DE-CHAUSSÉE

1	HALL D'ENTRÉE	4'-4" X 8'-3"	5	BUREAU	10'-0" X 10'-7"
2	WALK-IN	5'-0" X 5'-10"	6	SALLE À MANGER	9'-2" X 14'-1"
3	SALLE D'EAU	7'-5" X 4'-4"	7	SÉJOUR	12'-5" X 14'-1"
4	CUISINE	21'-7" X 11'-9"	8	TERRASSE COUVERTE	21'-5" X 6'-0"
SUPERFICIE BRUTE		984 pi ²			

U-401 Newtown

TALO

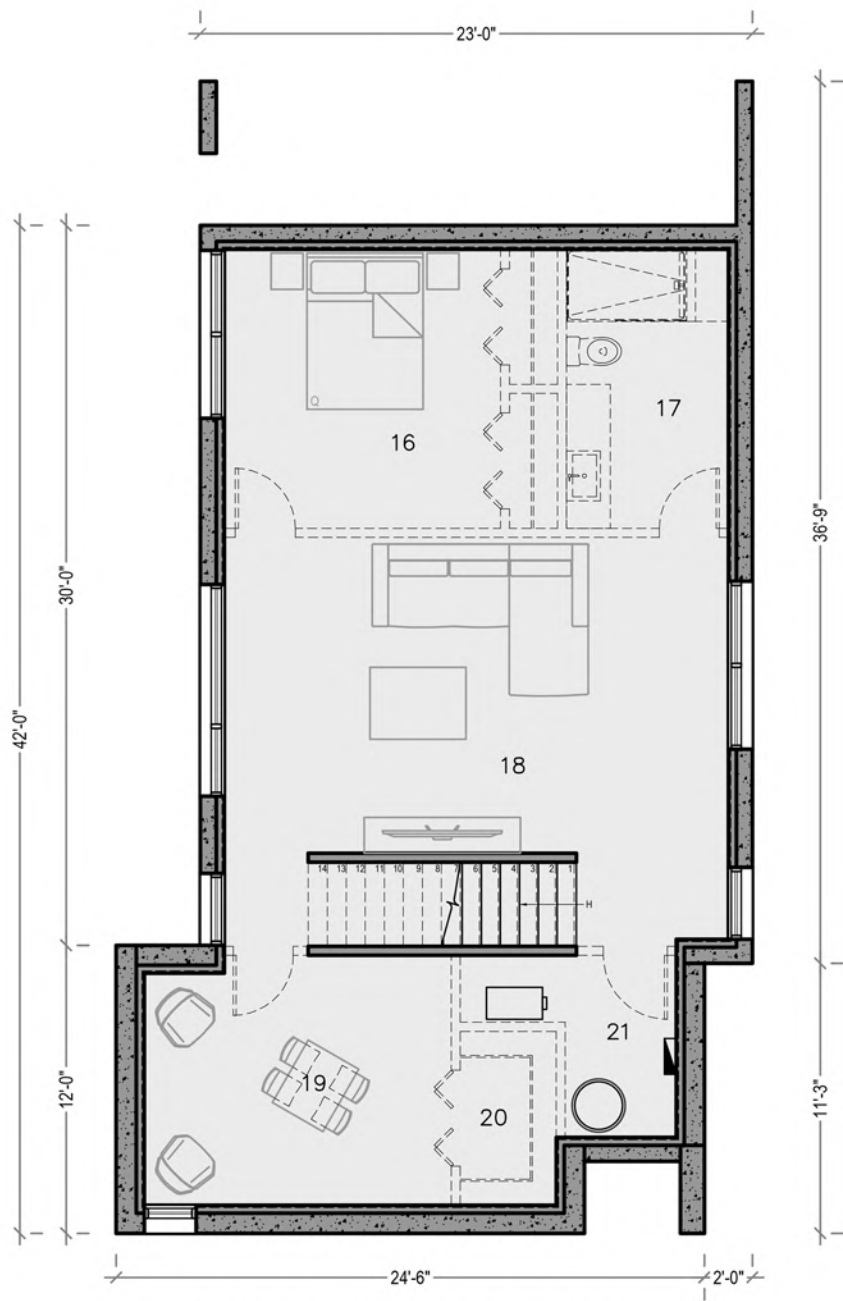


PLAN D'AMÉNAGEMENT - ÉTAGE

9	CIRCULATION	3'-6" X 20'-1"	13	WALK-IN	7'-9" X 4'-9"
10	CHAMBRE #2	9'-8" X 9'-4"	14	BUANDERIE	7'-2" X 5'-0"
11	CHAMBRE #3	9'-8" X 9'-6"	15	SALLE DE BAIN	7'-9" X 9'-7"
12	CHAMBRE PRINCIPALE	11'-7" X 11'-0"			
SUPERFICIE BRUTE		800 pi ²			

U-401 Newtown

TALO



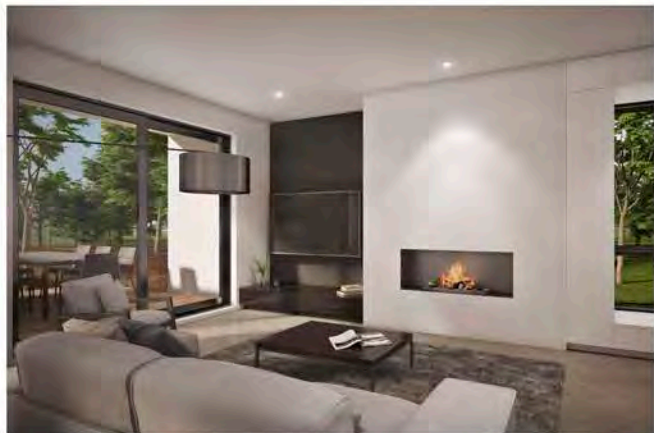
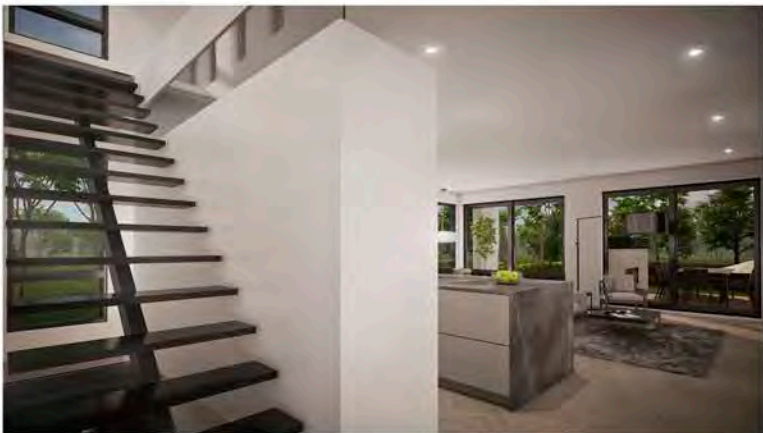
PLAN D'AMÉNAGEMENT - SOUS-SOL

16 CHAMBRE #4	11'-7" X 11'-7"	19 SALLE DE JEUX	12'-10" X 10'-5"
17 SALLE DE BAIN	6'-9" X 11'-7"	20 WALK-IN	4'-0" X 7'-4"
18 SALLE FAMILIALE	21'-1" X 13'-2"	20 MÉCANIQUE	4'-8" X 7'-7"

SUPERFICIE BRUTE 971 pi²

U-401 Newtown

TALO



U-401 Newtown

TALO



U-401 Newtown

TALO