

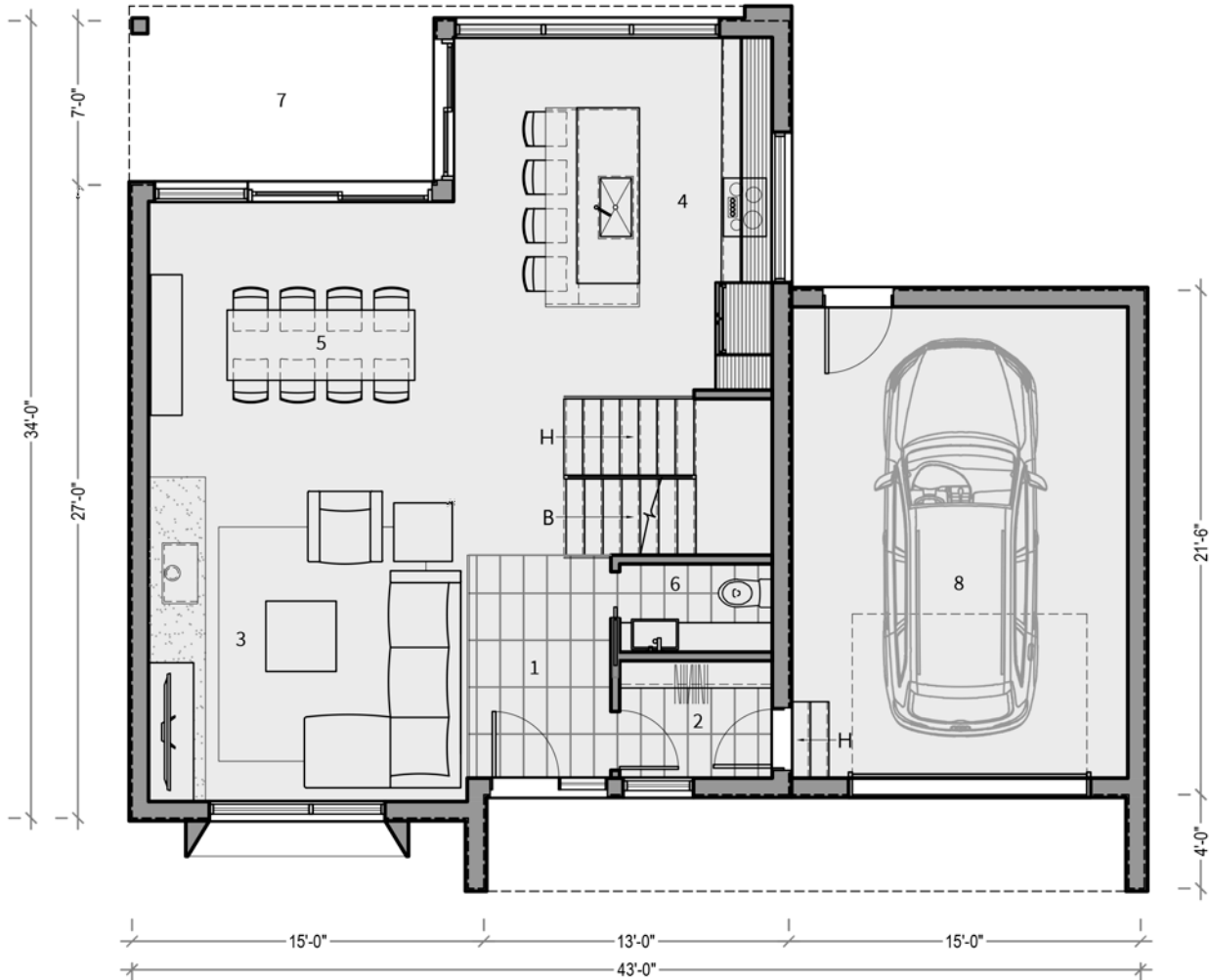


N-204 Fora

TALO

©Tous droits réservés

taloplans.ca



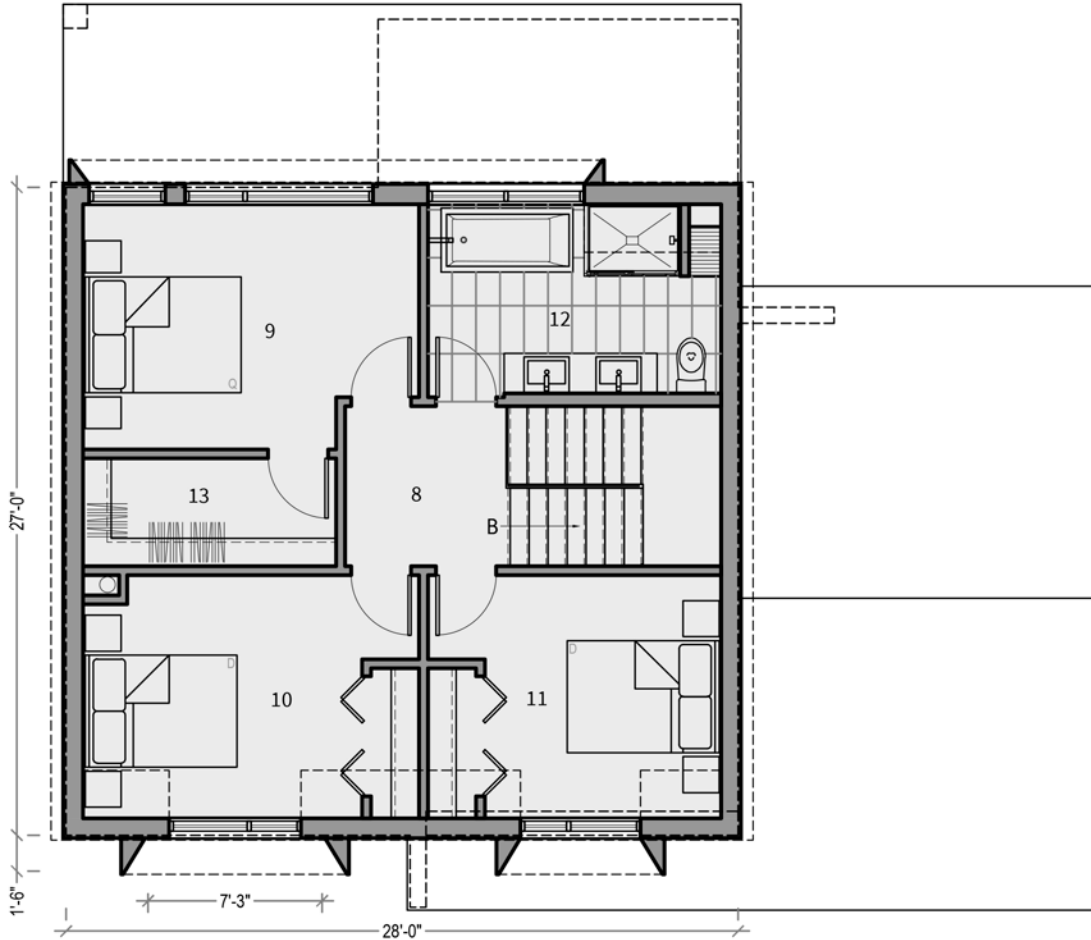
PLAN D'AMÉNAGEMENT - REZ-DE-CHAUSSÉE

1	HALL D'ENTRÉE	5'-9" X 9'-6"	6	SALLE D'EAU	6'-6" X 3'-9"
2	WALK-IN	6'-6" X 5'-0"	7	TERRASSE COUVERTE	13'-0" X 7'-6"
3	SÉJOUR	13'-7" X 13'-3"	8	GARAGE	14'-4" X 20'-1"
4	CUISINE	13'-7" X 15'-0"			
5	SALLE À MANGER	13'-0" X 14'-4"			

SUPERFICIE BRUTE 855 pi²
 GARAGE 340 pi²

N-204 Fora

TALO



PLAN D'AMÉNAGEMENT - ÉTAGE

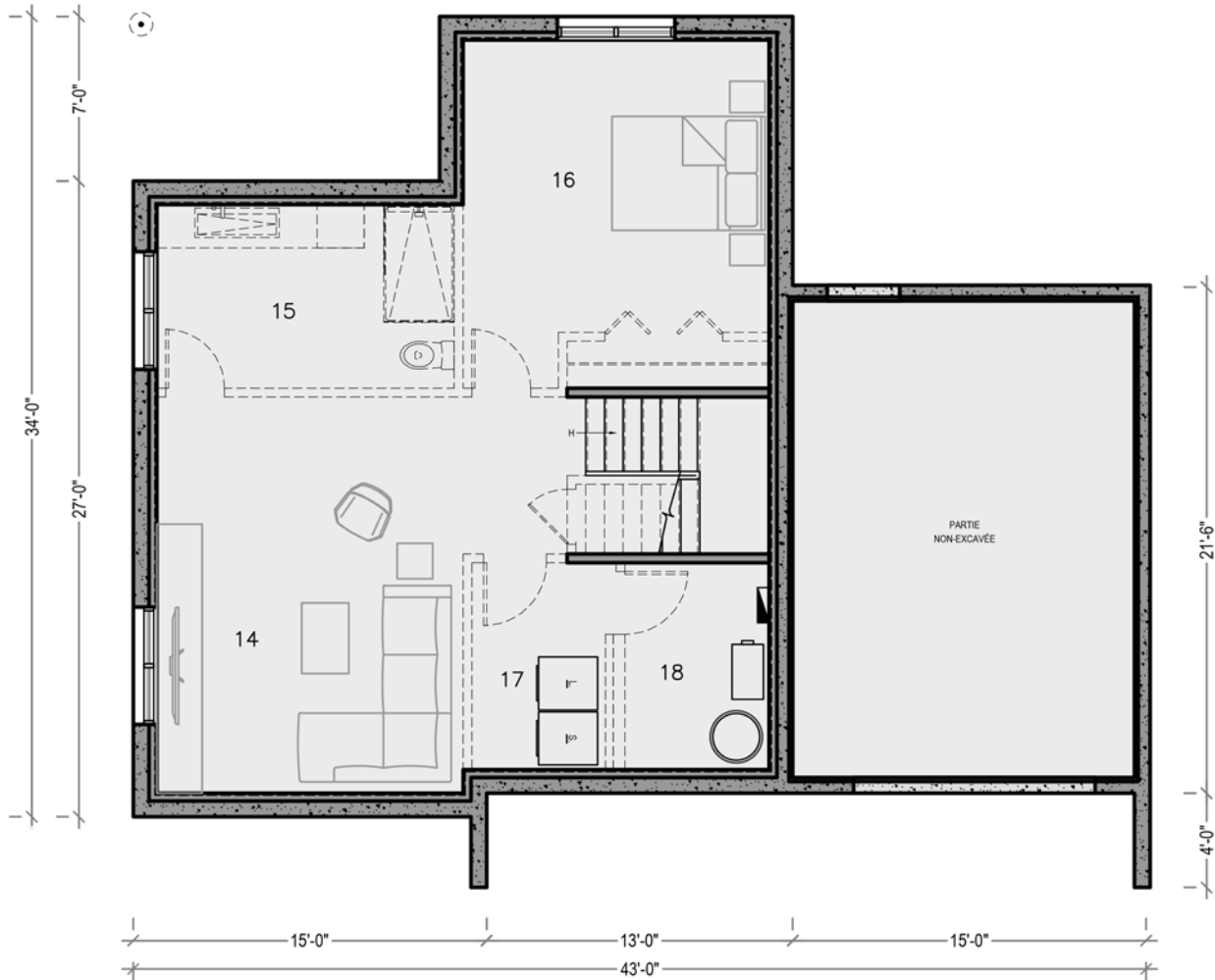
8	HALL	6'-10" X 6'-8"
9	CHAMBRE PRINCIPALE	14'-0" X 10'-2"
10	CHAMBRE #2	11'-8" X 10'-2"
11	CHAMBRE #3	9'-8" X 10'-2"
12	SALLE DE BAIN	12'-3" X 7'-11"
13	WALK-IN	10'-6" X 4'-6"

SUPERFICIE BRUTE

770 pi²

N-204 Fora

TALO



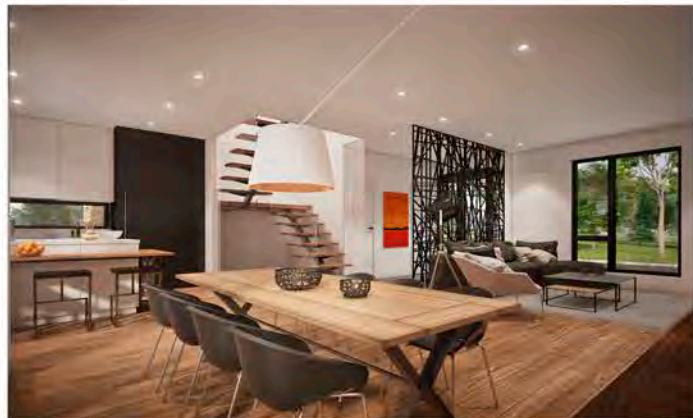
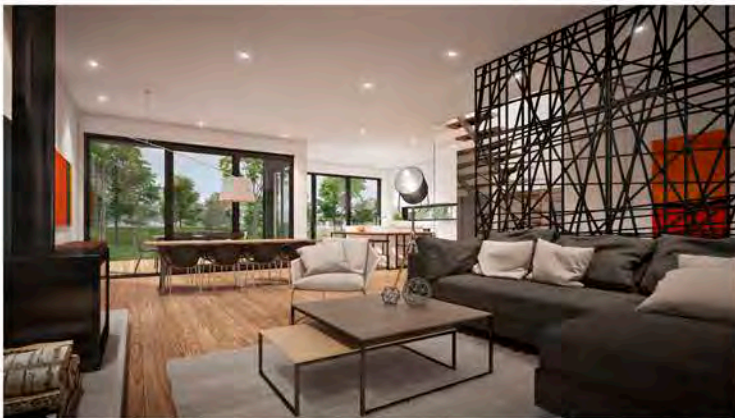
PLAN D'AMÉNAGEMENT - SOUS-SOL

14	SALLE FAMILIALE	13'-0" X 16'-10"
15	SALLE DE BAIN	12'-8" X 7'-10"
16	CHAMBRE #4	13'-0" X 12'-5"
17	SALLE DE LAVAGE	6'-2" X 8'-10"
18	MÉCANIQUE	6'-2" X 8'-10"

SUPERFICIE BRUTE 845 pi²

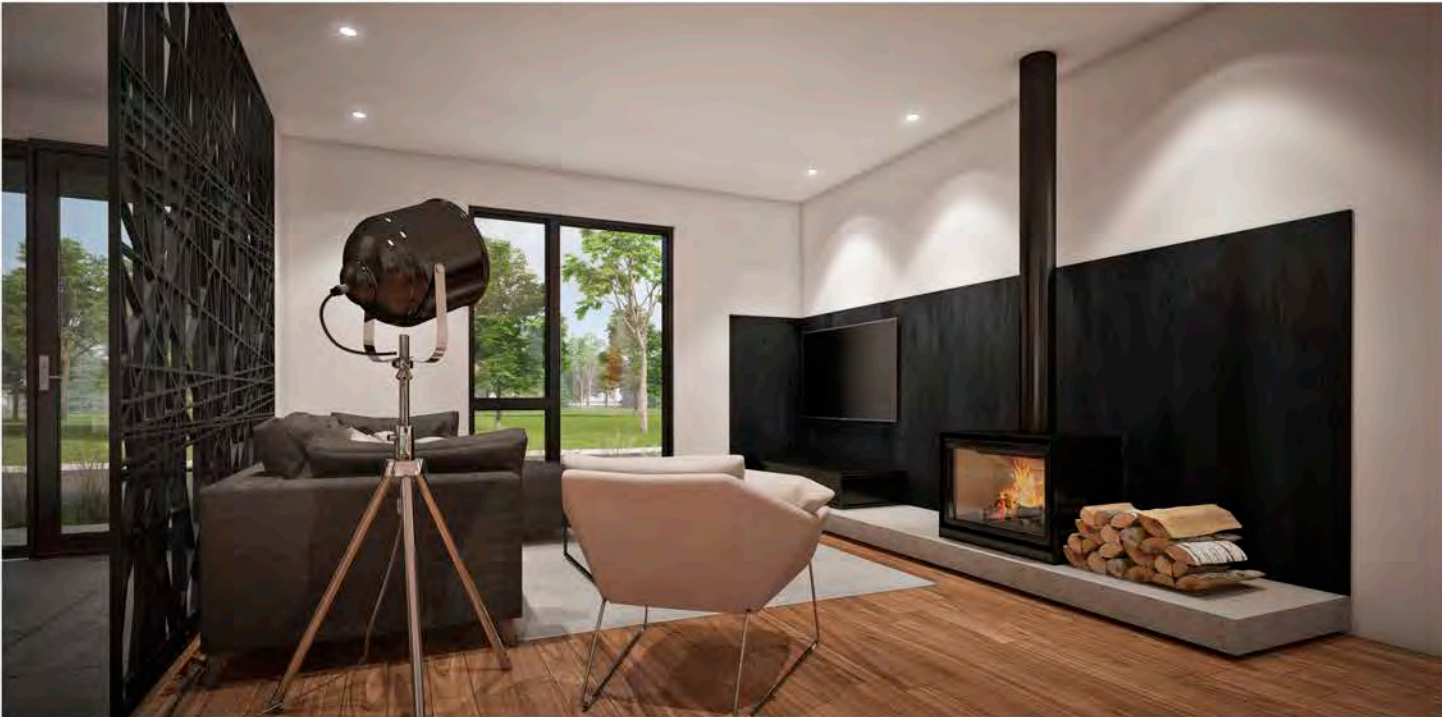
N-204 Fora

TALO



N-204 Fora

TALO



N-204 Fora

TALO