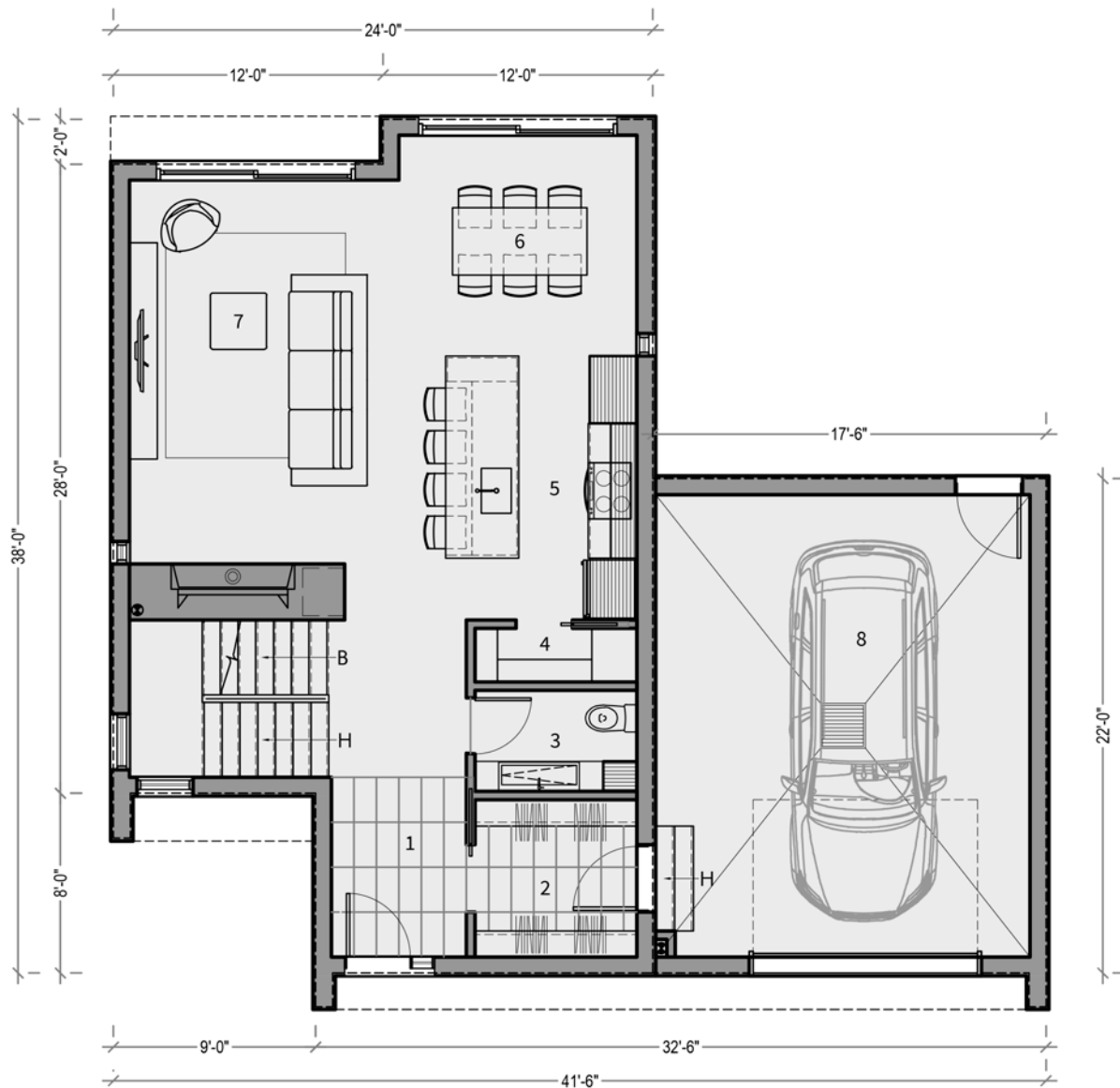




**N-202 Vik**

**TALO**

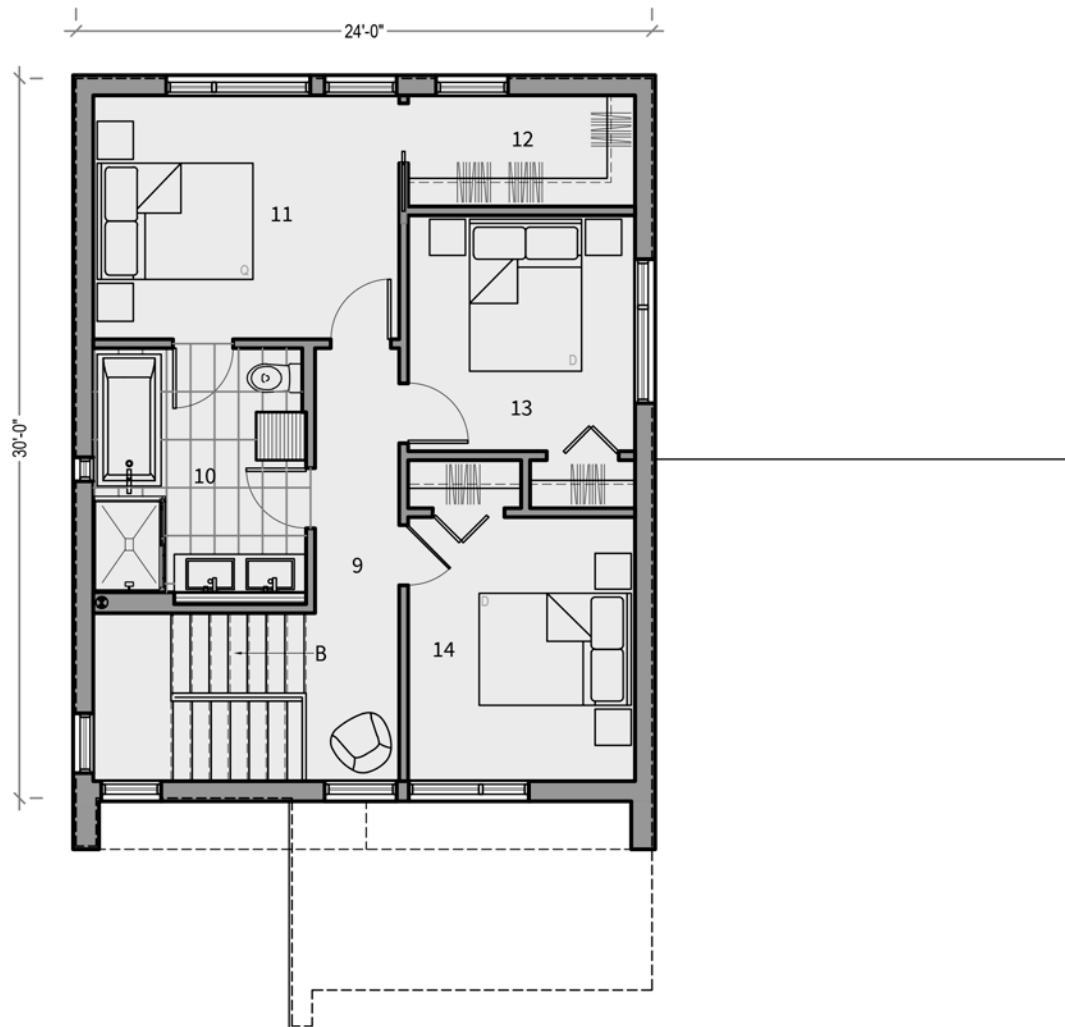


PLAN D'AMÉNAGEMENT - REZ-DE-CHAUSSÉE

1	HALL D'ENTRÉE	6'-0" x 8'-0"
2	WALK-IN	7'-2" x 7'-0"
3	SALLE D'EAU	7'-2" x 4'-6"
4	GARDE-MANGER	7'-2" x 2'-5"
5	CUISINE	8'-6" x 11'-9"
6	SALLE À MANGER	10'-7" x 9'-10"
7	SÉJOUR	12'-0" x 17'-1"
8	GARAGE	16'-8" x 20'-7"
SUPERFICIE BRUTE		822 pi <sup>2</sup>
GARAGE		399 pi <sup>2</sup>

**N-202 Vik**

**TALO**



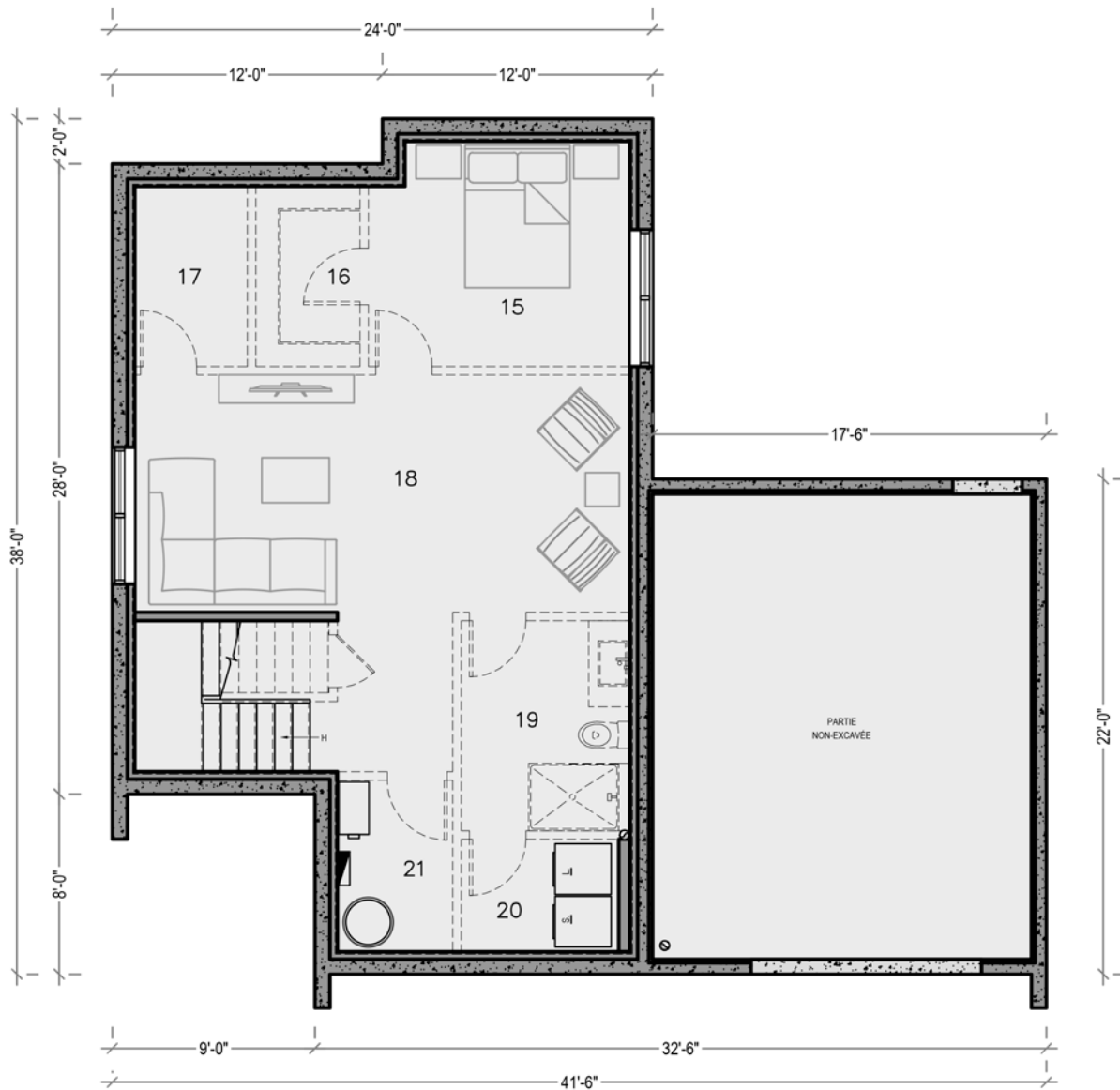
**PLAN D'AMÉNAGEMENT - ÉTAGE**

9	CIRCULATION	3'-2" X 18'-0"
10	SALLE DE BAIN	8'-10" X 10'-8"
11	CHAMBRE PRINCIPALE	12'-9" X 10'-2"
12	WALK-IN	9'-6" X 4'-8"
13	CHAMBRE #2	9'-6" X 9'-10"
14	CHAMBRE #3	9'-6" X 11'-0"

SUPERFICIE BRUTE      734 pi<sup>2</sup>

**N-202 Vik**

**TALO**



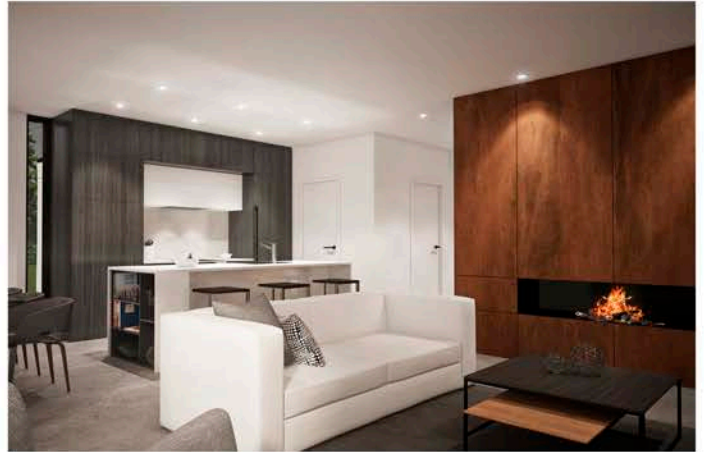
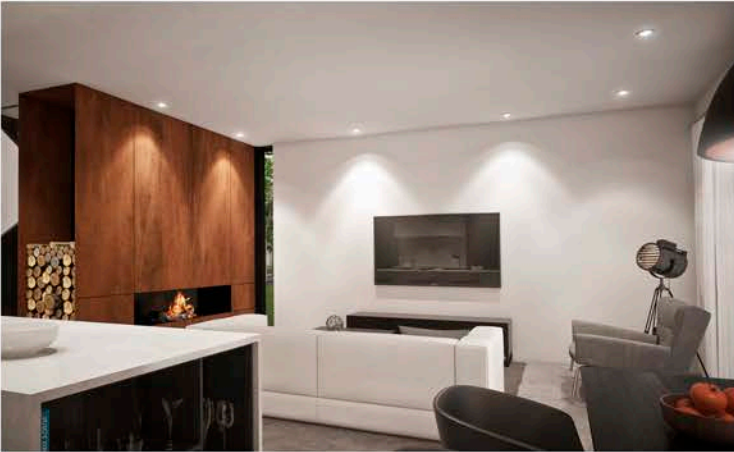
### PLAN D'AMÉNAGEMENT - SOUS-SOL

15	CHAMBRE #4	11'-8" X 10'-0"
16	WALK-IN	4'-8" X 8'-0"
17	RANGEMENT	5'-2" X 8'-0"
18	SALLE FAMILIALE	22'-0" X 10'-7"
19	SALLE DE BAIN	7'-6" X 9'-4"
20	SALLE DE LAVAGE	7'-0" X 5'-0"
21	MÉCANIQUE	5'-2" X 7'-8"

SUPERFICIE BRUTE 812 pi<sup>2</sup>

# N-202 Vik

# TALO



**N-202 Vik**

**TALO**



# N-202 Vik

# TALO