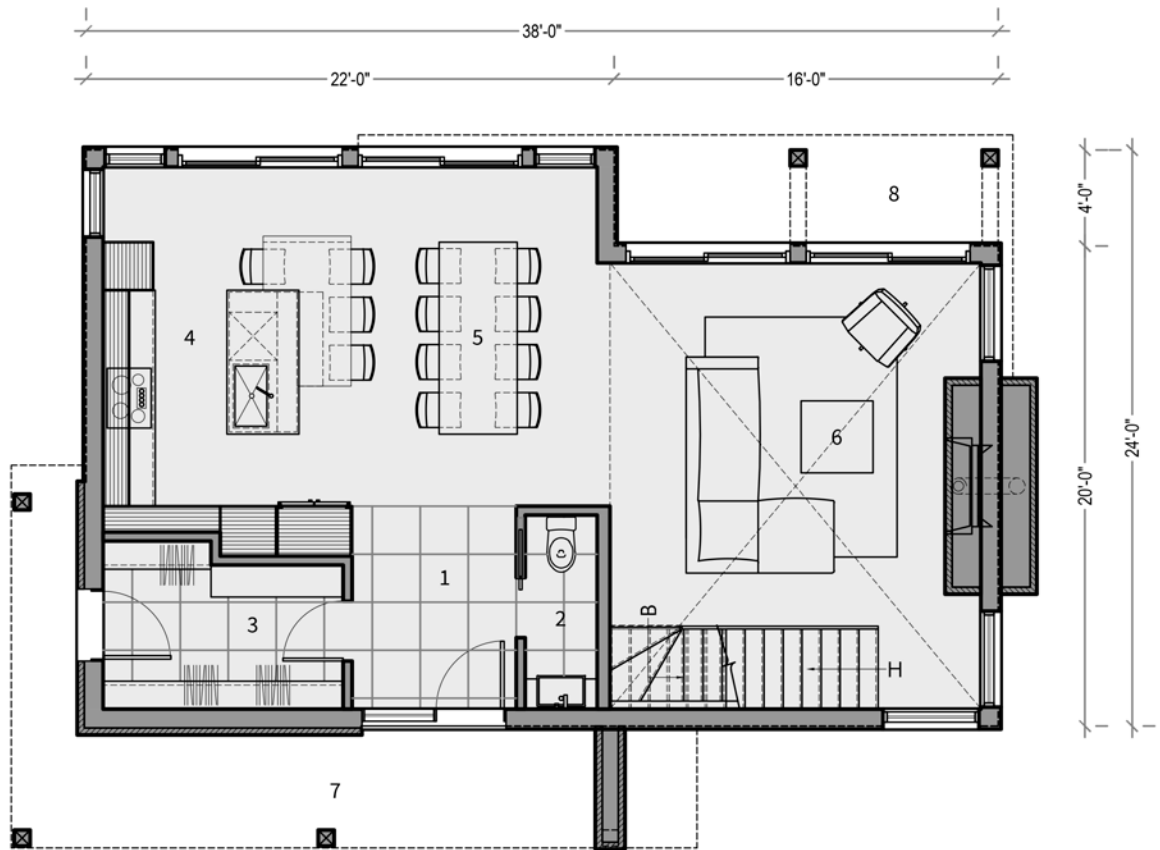




B-501 Adirondack

TALO



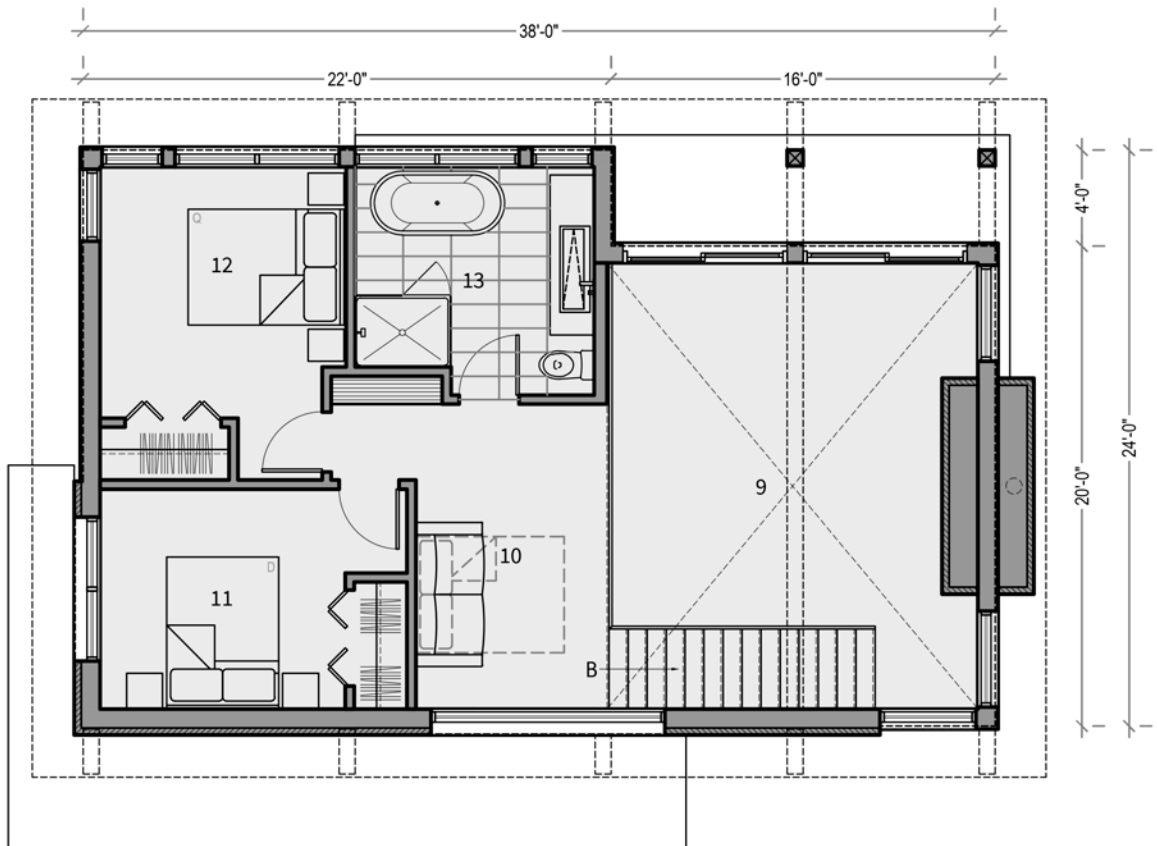
PLAN D'AMÉNAGEMENT - REZ-DE-CHAUSSÉE

1	HALL D'ENTRÉE	6'-10" X 8'-6"	5	SALLE À MANGER	8'-5" X 14'-2"
2	SALLE D'EAU	3'-0" X 8'-1"	6	SÉJOUR	15'-6" X 18'-7"
3	WALK-IN	10'-0" X 6'-0"	7	TERRASSE COUVERTE	24'-4" X 5'-0"
4	CUISINE	12'-2" X 15'-2"	8	TERRASSE COUVERTE	16'-0" X 4'-0"

SUPERFICIE BRUTE 885 pi²

B-501 Adirondack

TALO

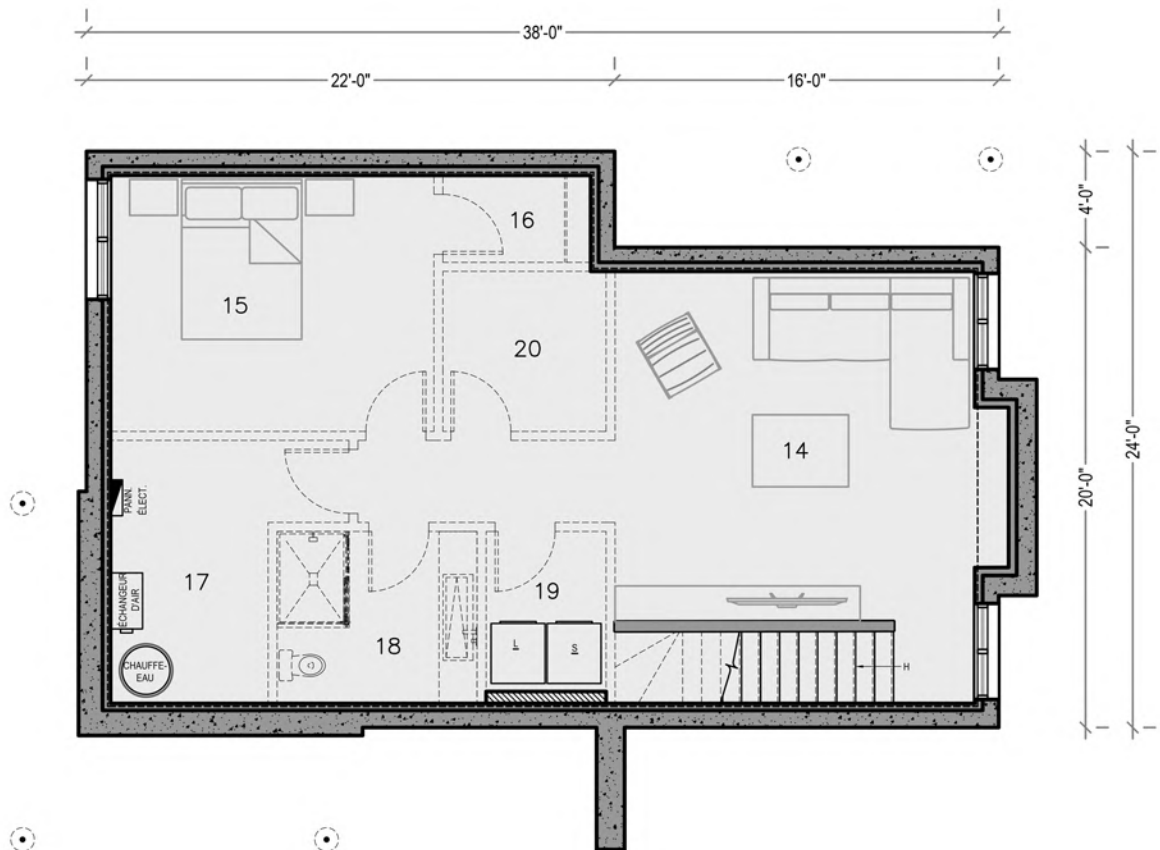


PLAN D'AMÉNAGEMENT - ÉTAGE

9	OUVERT SUR SÉJOUR	15'-3" X 18'-7"
10	MÉZZANINE	8'-0" X 12'-9"
11	CHAMBRE #2	10'-3" X 9'-2"
12	CHAMBRE PRINCIPALE	10'-3" X 10'-6"
13	SALLE DE BAIN	10'-0" X 9'-6"
SUPERFICIE BRUT		885 pi ²

B-501 Adirondack

TALO



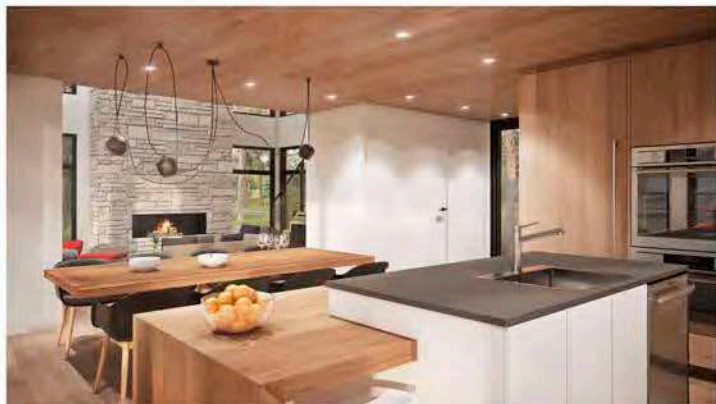
PLAN D'AMÉNAGEMENT - SOUS-SOL

14	SALLE FAMILIALE	15'-2" X 14'-3"	18	SALLE DE BAIN	8'-4" X 7'-2"
15	CHAMBRE #4	13'-6" X 10'-8"	19	SALLE DE LAVAGE	5'-0" X 7'-2"
16	WALK-IN	6'-2" X 3'-8"	20	RANGEMENT	6'-10" X 6'-8"
17	MÉCANIQUE	6'-7" X 11'-0"			

SUPERFICIE BRUTE 870 pi²

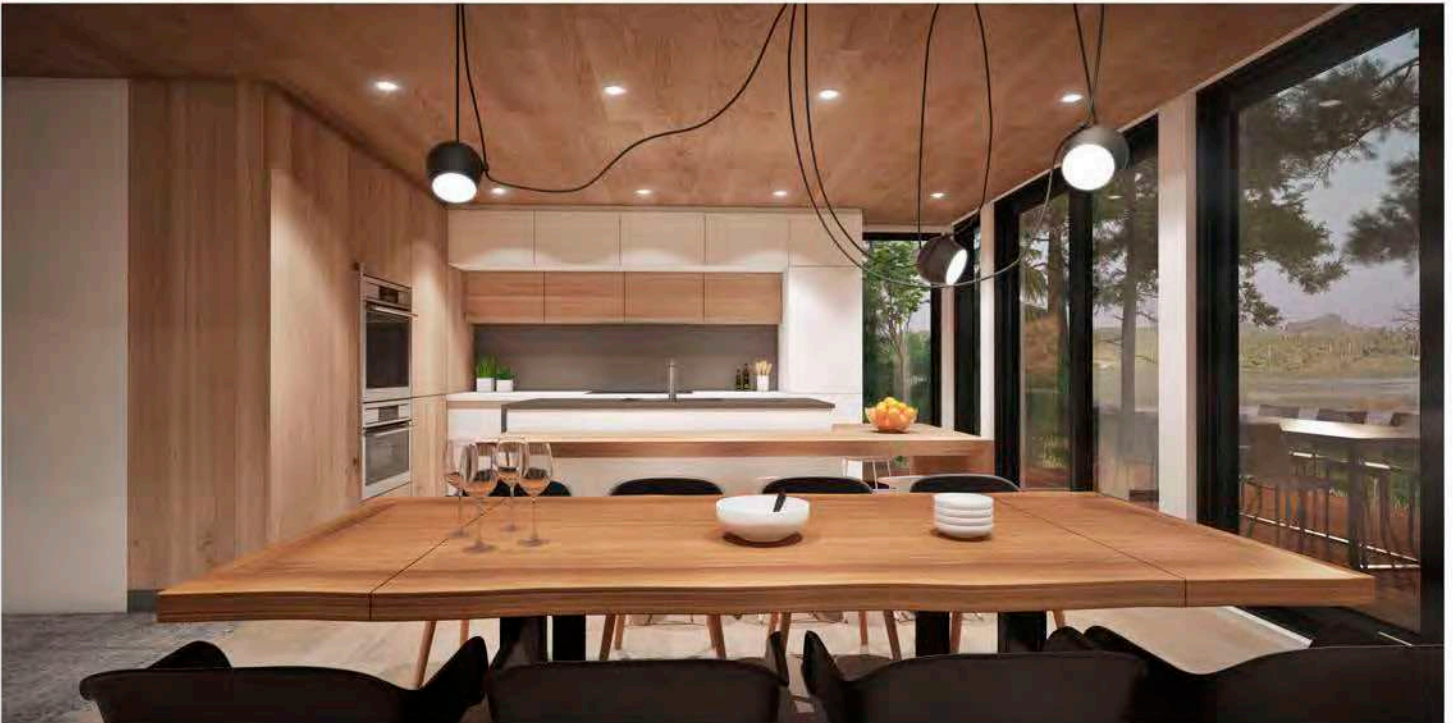
B-501 Adirondack





B-501 Adirondack

TALO



B-501 Adirondack

TALO